

LOUDSPEAKERS - LINE ARRAY

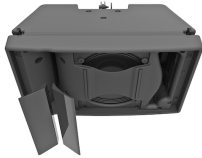
NEXO GEO M10-12 120/80 DEGREE LINE ARRAY LOUDSPEAKER



Two versions of the GEO M10 (offering 12.5 and 25 of vertical dispersion) can be configured manually, without tools, for 80 or 120 horizontal dispersion, and are complemented by the dedicated MSUB15. Extending system response down to 40Hz, the sub can be configured in Omni or Cardioid modes in flown arrays or groundstacks, using a versatile bumper just 531mm wide and 21Kg in weight, NEXO's extraordinary GEO M10 combines a number of patented technologies with advanced DSP control and integral, no loose parts rigging to create a compact, powerful, wide-bandwidth module that's quick and easy to deploy in flown arrays or groundstacks favouring innovative new thinking over conventional line array wisdom, GEO M10 partners a 1.4 inch titanium diaphragm HF driver with a single, Neodymium-magnet 100 driver and delivers an unprecedented ratio of LF response to cabinet size, outperforming many larger, dual-driver designs. And with a maximum SPL of 136dB, GEO M10 is twice as powerful as its sister-system, the GEO M6, making it ideal for speech and music events with larger audiences. GEO M10 and MSUB15 are available in Touring and Installation versions. Cabinets are available in black, white and custom RAL colours. Plug and Play amplification and processing comes from NEXO's compact and powerful NXAMP or DTD and DTDAMP.



Orbital Sound Ltd, 57 Acre Lane,
Brixton, London, SW2 5TN,
United Kingdom.
Tel: +44 207 501 6868
hire@orbitalsound.com
www.orbitalsound.com



leo
M10



Orbital Sound Ltd, 57 Acre Lane,
Brixton, London, SW2 5TN,
United Kingdom,
Tel: +44 207 501 6868
hire@orbitalsound.com
www.orbitalsound.com