

RECORDING & PLAYBACK

NEMESIS OSCA R2 2 WAY PROGRAMABLE OSC BUTTON BOX



The OSCA-R2 is a next-generation multi-command destination show control button box featuring OSC network input, Power over Ethernet (PoE) or 5V DC power, two large high-quality illuminated momentary push buttons (non-latching), and three independent OSC-triggered LED indicators. The two momentary push buttons can be easily programmed to execute a wide range of OSC commands via the simple web interface. Multiple OSCA-R2 units can be deployed on a single OSC network, enabling complex and creative control scenarios in a robust and coherent manner. Button rim illumination is fully configurable—choose from illumination on press, constant illumination (useful in dark environments), or off, with independent brightness control. The OSCA-R2 also sports Red, Amber and Green high quality LED indicators that can be set in the software to react to appropriate OSC commands found on the network. With a little bit of thought and programming the OSCA-R2 becomes a hugely powerful device, triggering commands, receiving status indications from other devices, even acting as an OSC driven traditional Cue-Light outstation if required. It supports control of any OSC-enabled device, including QLab, CSC, OSC-compatible mixing consoles, d&b Soundscape, ETC EOS lighting consoles, ONLX Ctrl Suite, Yamaha's DME7, and many others. Moreover, the OSCA-R2 can interface with hardware requiring simple contact closures—such as GPI

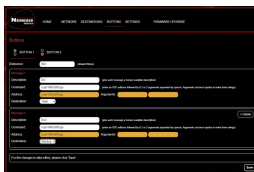
relays—using the OSCA-O4 (4-channel OSC relay output box) or OSCA-IO16 Pro as part of the same OSC network. This makes it suitable for a wide variety of applications, including triggering door locks, Kabuki drops, and other mechanical automation systems.

The OSCA-R2 supports configuration backup and restore, ensuring settings are preserved and easy to recover.

Programming the OSCA-R2 is straightforward: simply connect it to a laptop, enter its IP address, and a simple yet powerful user interface guides you through setup. If the OSCA OSC network is internet-connected, remote programming, triggering (via VPN), system updates, and future upgrades are all supported. It is fully compatible with third-party OSC commands and the wider Nemesis OSCA product range.

Key features:

- *2 independent brushed aluminium illuminated 30mm IP67 rated high quality tactile momentary push buttons
- *Red / Green controllable button ring lights
- *Variable “de-bounce” (0 > 2000ms)
- *3 independent Red / Amber / Green LED's programmable to reflect OSC input commands from other devices
- *Each OSCA-R2 can hold up to 5 OSC network device destinations in its memory
- *Each of the 2 buttons can send a message to 2 separate OSC network device destinations at the same time
- *Simple yet powerful programming via embedded user interface (no need for set up programs or internet connection)
- *Presets for basic Qlab, CSC and Nemesis OSCA-O4 Relay Box operation
- *Advanced mode for free-form complex OSC string commands
- *Fully compatible with all 3rd party OSC commands and Nemesis Osca-O4 Relay Box
- *Config download, backup and restore
- *Internet enabled for updates and upgrades
- *DHCP served or fixed IP address
- *Industrial Ethercon network connector
- *Multicolour LED showing network and power status
- *Power over ethernet enabled (POE IEEE 802.3 compliant)
- *Alternative 5VDC powered (USB C-Type)



Orbital Sound Ltd, 57 Acre Lane,
Brixton, London, SW2 5TN,
United Kingdom,
Tel: +44 207 501 6868
hire@orbitalsound.com
www.orbitalsound.com

NEMESIS
FIREWALL

HOME NETWORK DESTINATIONS FILTERS SETTINGS FIREWALL LISTS

Network

Network IP Address:

Subnet Mask:

Gateway:

User Name (END):

Password: ☐ Use your computer's default gateway (checked) ☐ Use the firewall's default gateway (unchecked)

OS/SC Listen Port: